

SUCTION CUPS / Flat

VF15

Features and Strengths

Specifically designed for flat and curved surface
Available to handle multiple objects with the same suction cup

Examples of use

Metal sheet, Veneer sheets, Glass, Electronic components



Recommended Lifting Force (Max.)

| Model | Volume (cm ³) | Lifting Force (Kg) - Perpendicular | | | Lifting Force (Kg) - Parallel | | |
|-------|---------------------------|------------------------------------|----------|----------|-------------------------------|----------|----------|
| | | - 20 kPa | - 60 kPa | - 90 kPa | - 20 kPa | - 60 kPa | - 90 kPa |
| VF15 | 0.037 | 0.35 | 0.86 | 1.12 | 0.35 | 0.66 | 0.76 |

※ The lifting force above does not include safety factor

Material Specifications

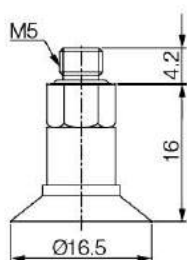
| Material | Hardness Shore (°) | Color | Temperature (°C) |
|----------------------|--------------------|-------------------|------------------|
| NBR | 60 | Black | -20~110 |
| Silicone | 55 | Red | -70~200 |
| White Silicone | 55 | Translucent White | -70~200 |
| White Silicone (FDA) | 55 | Translucent White | -70~200 |
| High temp. Silicone | 50 | Blue | -70~280 |
| Conductive Silicone | 70 | Smoky Black | -45~90 |
| Urethane | 60 | Dark Green | 0~100 |
| Mark Free | 75 | Black | -10~100 |

Material Resistance

| Description | NBR | Silicone | White Silicone | High temp. Silicone | Conductive Silicone | Urethane | Mark Free |
|-----------------|-----------|-----------|----------------|---------------------|---------------------|-----------|-----------|
| Wear Resistance | Excellent | Good | Good | Good | Good | Excellent | Good |
| Oil | Excellent | Poor | Poor | Poor | Poor | Excellent | Excellent |
| Weather / Ozone | Fair | Excellent | Excellent | Excellent | Excellent | Excellent | Excellent |
| Alcohol | Good | Good | Good | Good | Good | Fair | Good |
| Acid | Fair | Poor | Poor | Poor | Poor | Poor | Excellent |

Dimension

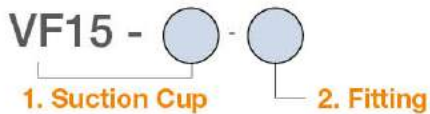
[Unit : mm]



[With M5M fitting]



I Build an Ordering No.



| 1. Suction cup | Description | Symbol |
|----------------|--|---------------|
| | Flat suction cup, 15mm diameter, Nitrile (NBR) | VF15-N |
| | Flat suction cup, 15mm diameter, Silicone | VF15-S |
| | Flat suction cup, 15mm diameter, White silicone | VF15-WS |
| | Flat suction cup, 15mm diameter, White silicone (FDA) | VF15-WS (FDA) |
| | Flat suction cup, 15mm diameter, High temperature silicone | VF15-HS |
| | Flat suction cup, 15mm diameter, Conductive silicone | VF15-CS |
| | Flat suction cup, 15mm diameter, Urethane | VF15-U |
| | Flat suction cup, 15mm diameter, Mark free | VF15-A |

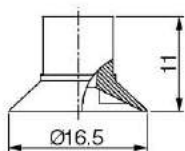
| 2. Fitting | Description | Symbol |
|------------|------------------------------------|--------|
| | Fitting, M5 male | M5M |
| | Efficiency valve, Fitting, M5 male | M5M-EV |

I Spare Parts – Rubber Parts

| Part No. | Description | Weight (g) | Color |
|---------------|--|------------|-------------------|
| VF15-N | Flat suction cup, 15mm diameter, Nitrile (NBR) | 0.73 | Black |
| VF15-S | Flat suction cup, 15mm diameter, Silicone | 0.65 | Red |
| VF15-WS | Flat suction cup, 15mm diameter, White silicone | 0.64 | Translucent White |
| VF15-WS (FDA) | Flat suction cup, 15mm diameter, White silicone (FDA) | 0.64 | Translucent White |
| VF15-HS | Flat suction cup, 15mm diameter, High temperature silicone | 0.66 | Blue |
| VF15-CS | Flat suction cup, 15mm diameter, Conductive silicone | 0.64 | Smoky Black |
| VF15-U | Flat suction cup, 15mm diameter, Urethane | 0.70 | Dark Green |
| VF15-A | Flat suction cup, 15mm diameter, Mark free | 0.84 | Black |

I Dimension

[Unit : mm]



[Rubber Part]

I Spare Parts – Fittings

| Part No. (Code No.) | Fitting size | Description | Weight (g) |
|---------------------|--------------|---------------------------|------------|
| 350 000 3102 | M5M | M5 male | 2.52 |
| 350 010 3102 | M5M-EV | Efficiency valve, M5 male | 2.63 |